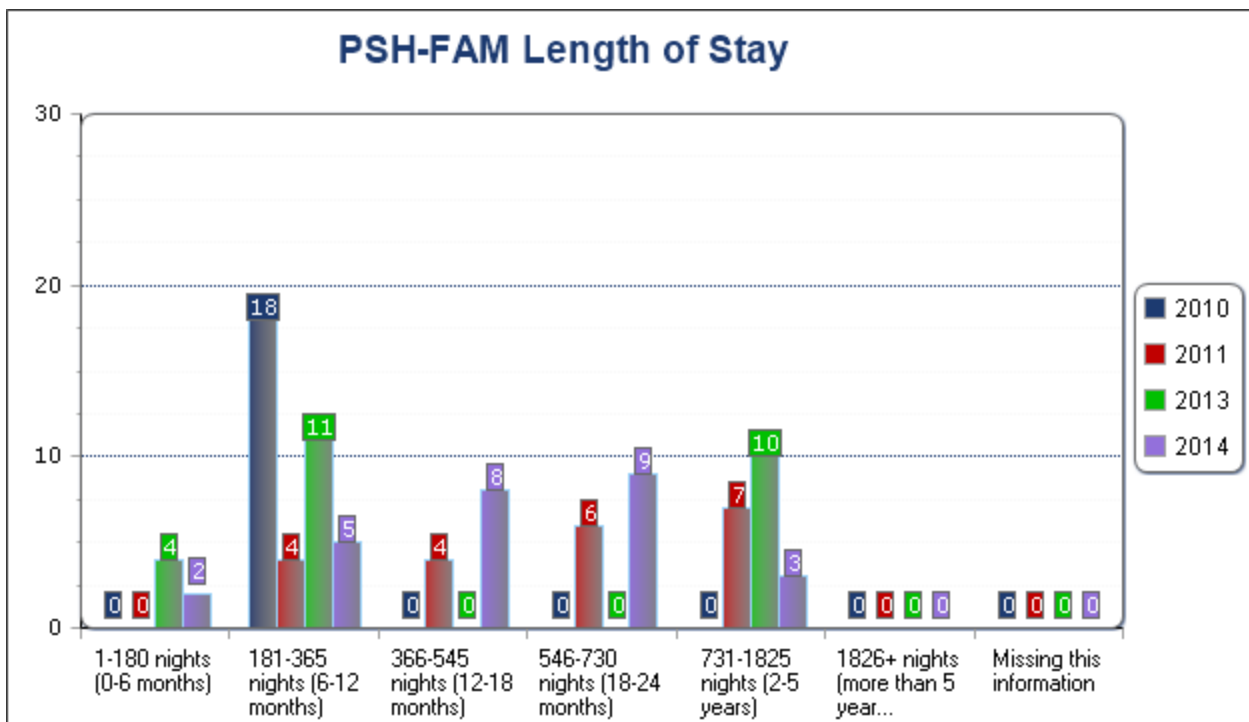


AHAR Length of Stay in Permanent Supportive Housing CoC: LA-507 Alexandria/Central Louisiana CoC

Length of Stay for Families in Permanent Supportive Housing

This table includes data about total length of stay in permanent supportive housing for people in households with at least one adult and one child during the AHAR reporting period.

Length of Stay	2010	2011	2013	2014	2015
1-180 nights (0-6 months)	0	0	4	2	0
181-365 nights (6-12 months)	18	4	11	5	0
366-545 nights (12-18 months)	0	4	0	8	0
546-730 nights (18-24 months)	0	6	0	9	5
731-1825 nights (2-5 years)	0	7	10	3	16
1826+ nights (more than 5 years)	0	0	0	0	0
Missing this information	0	0	0	0	0



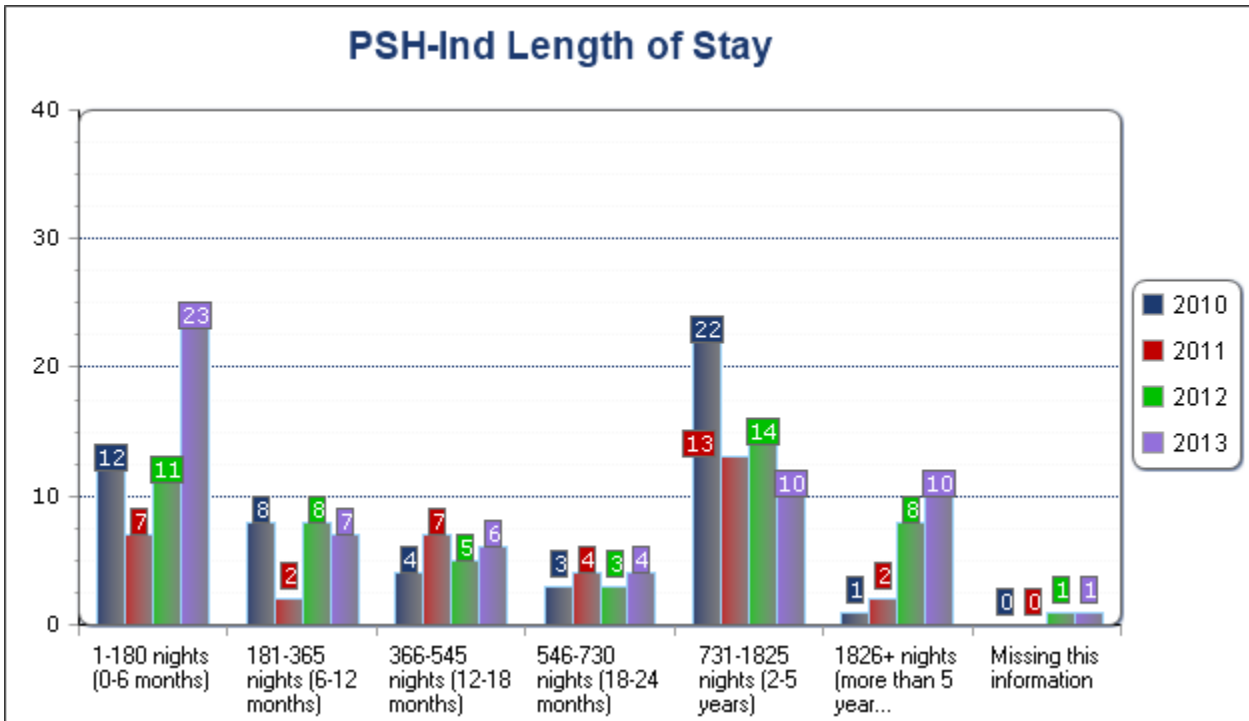
AHAR Length of Stay in Permanent Supportive Housing CoC: LA-507 Alexandria/Central Louisiana CoC

2016	2017
0	0
2	0
0	2
0	0
7	4
0	0
0	0

Length of Stay for Individuals in Permanent Supportive Housing

This table includes data about total length of stay in permanent supportive housing for people in households comprised of only adults or only children during the AHAR reporting period.

Length of Stay	2010	2011	2012	2013	2014
1-180 nights (0-6 months)	12	7	11	23	12
181-365 nights (6-12 months)	8	2	8	7	10
366-545 nights (12-18 months)	4	7	5	6	13
546-730 nights (18-24 months)	3	4	3	4	4
731-1825 nights (2-5 years)	22	13	14	10	11
1826+ nights (more than 5 years)	1	2	8	10	9
Missing this information	0	0	1	1	0



AHAR Length of Stay in Permanent Supportive Housing CoC: LA-507 Alexandria/Central Louisiana CoC

2015	2016	2017
7	13	16
7	13	7
7	3	5
5	3	9
20	20	18
9	9	9
0	0	0